

SmartTWO

Installation Guide for Anchor positioning

Site preparation

• ANCHOR

The installer can use a prefabricated anchor offered by AddÉnergie (part number: S2-V2-ACCSP-01-03) or make his own using 12" long 1/2" threaded rods spaced according to the pattern shown on left.

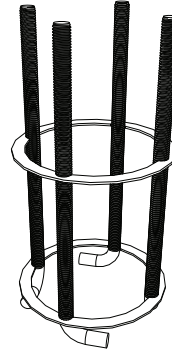


Fig. 1: Prefabricated anchor

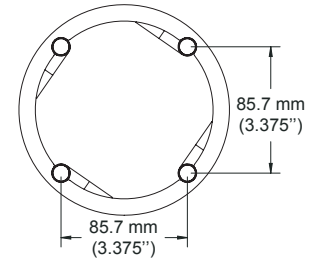


Fig. 2: Threaded rod spacing

• CONCRETE BASE

The base can be prefabricated or made on site using concrete formwork.

Determine the base's height (H), depth in the ground (D) and the surface area (A) of its sole according to the soil type and the freeze thaw specifications of the installation area.

Use an electrical conduit of the appropriate size with a diameter of 2.5" or less to bring the electrical cables to the center of the anchor.

The dimension of the top of the base, and the position of the anchor shall be determined according to the specific charging station configuration, as detailed on the next page.

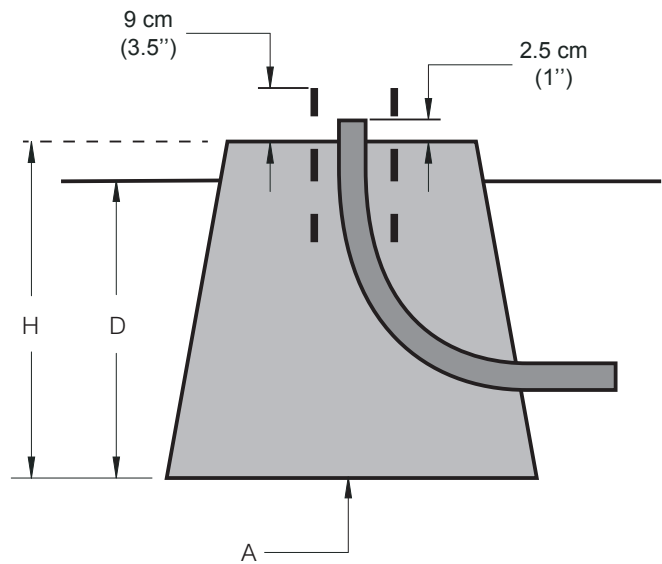
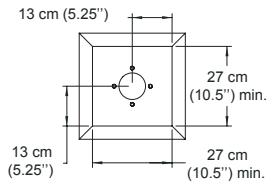
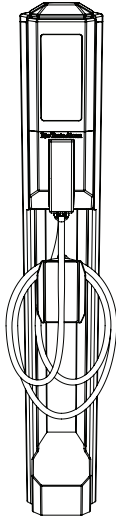


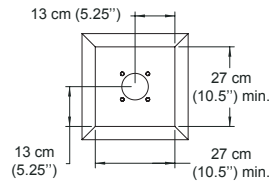
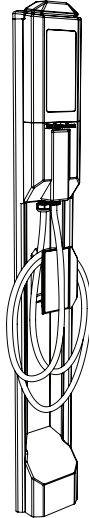
Fig. 3: Concrete base

Anchor positioning

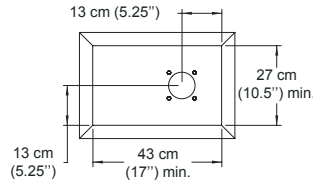
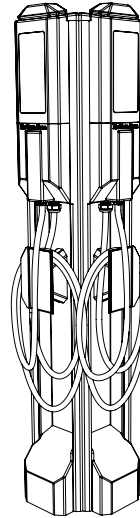
Single pedestal, straight facing



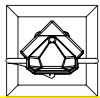
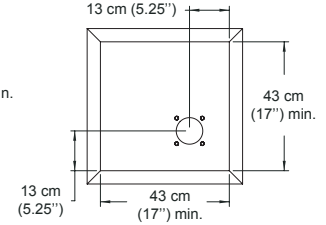
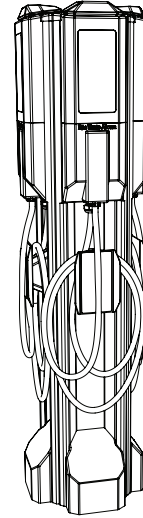
Single pedestal, angle facing



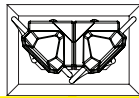
Double pedestal



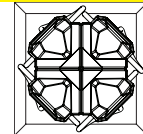
Quad pedestal



The pedestal can be installed in the center of the parking stall. In such case, the anchor shall be laid out on the base as shown above, to make sure that the station is straight facing.



For an initial installation of a single pedestal that will evolve to a dual in the future, it is recommended to install the base at the intersection of 2 parking stalls, with the anchor positioned to have the charging station face at 45°.



A quad pedestal shall be installed at the intersection of four parking stalls.