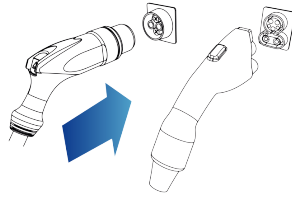
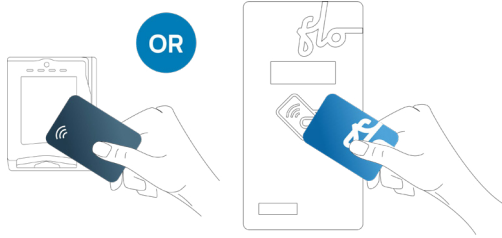


User Guide - SmartDC™ with Credit Card Reader



1

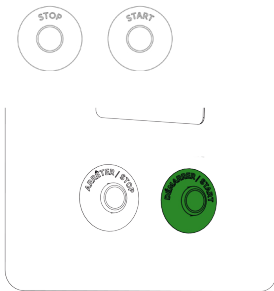
Plug the connector (CHAdeMO or SAE Combo (CCS), depending on the car model) into the vehicle.



2

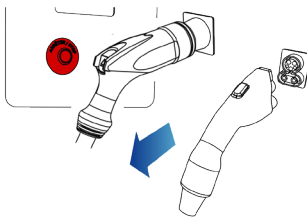
Activate the station:

- Place your FLO card or payment card on the reader; OR
- Select the station in the FLO mobile app and tap “Start a session”.



3

If the charging doesn't start automatically, press the flashing “START” button located at the front of the station.



4

Once charging is complete, press the “STOP” button, unplug the connector and replace it in its socket.



5

Scan the QR code that appears on the card reader screen to retrieve the charging session information or view your charging history in the FLO app.

IMPORTANT: Once charging is complete, make sure to wind the cable and store the connector in its socket.

Contact us: info@flo.com 1 (855) 543-8356 flo.com